



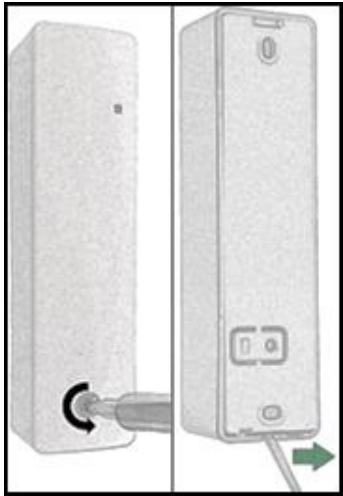
QUICK INSTALLATION GUIDE

TEMPERATURE/HUMIDITY DEVICE (LAN-WMBUS-G2-TH)



Recommended mounting instructions:

- For best horizontal range, place the device upright
- For best vertical range, place the device horizontally
- For maximum range, mount the device and receiver so they have the same polarization
- Avoid placing directly against metallic objects to maximize range
- Mount with either double-sided tape or screws



Step 1a (left):

Open the device using a torx screwdriver on the front screw. Unscrew by turning counterclockwise.

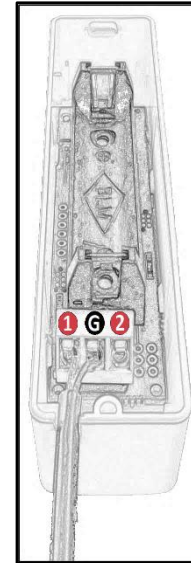
Step 1b (right):

Separate the back piece by using, for example, a screwdriver at the bottom of the device as in the right picture.

Step 2

Once opened, the PCB will be visible on the inside. If external temperature probes are going to be used, go to **Step 3**.

If no external temperature probes are going to be connected, remove the plastic piece at the battery to activate the device. The LED at the front will be active for five seconds then turn off to indicate successful startup. Skip **Step 3** and go directly to **Step 4**.



Remove battery before mounting/unmounting cables!

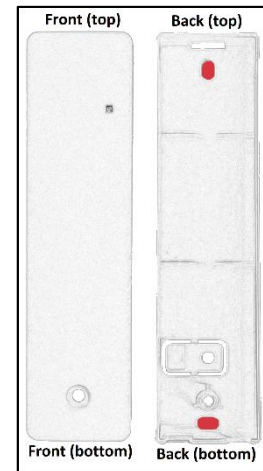
Step 3:

The device supports four temperature probes. Cut out the plastic at the bottom according to the picture before mounting the probes.

- Connect YELLOW cable from the probe to input marked by (1)
- Connect BLACK cable from the probe to input marked by (G)
- Connect RED cable from the probe to input marked by (2)

Note: Do NOT let a cable cover the hole at the bottom.

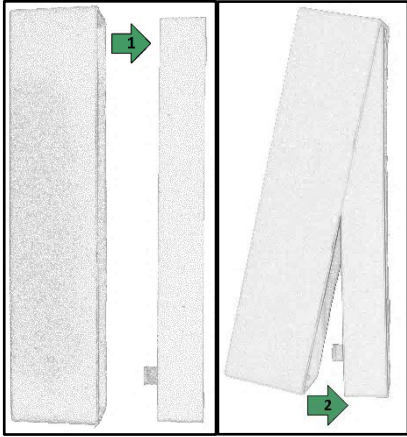
Once all cables are connected, insert the battery again. The LED at the front will be active for five seconds then turn off to indicate a successful startup.



Step 4:

Mount the back piece to a wall according to the recommended mounting instructions on the first page.

If screws are used, fasten the screws in the holes marked by red in the picture.

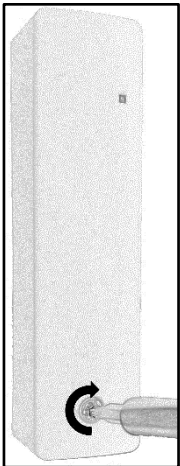


Step 5a (left):

See picture in **Step 4** on the orientation of the device, then insert the top part of the front piece onto the top part of the back piece (1).

Step 5b (right):

Insert the bottom part of the front piece onto the bottom part of the back piece (2).



Step 6:

Put the torx screw (from **Step 1**) in the hole at the front and tighten the screw using a torx screwdriver.

Make sure that the device is securely mounted.

Lay out the temperature cable(s) at the area where temperature measurements are needed.

Installation is complete!