

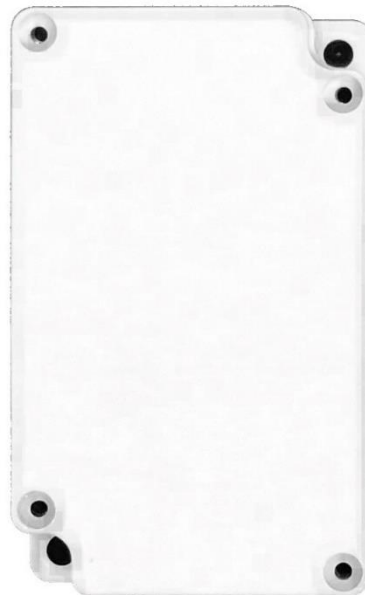


WIRELESS BUILDING TECHNOLOGY

QUICK INSTALLATION GUIDE

TEMPERATURE AND HUMIDITY
OUTDOOR (LAN-WMBUS-O-TH)
FREEZER (LAN-WMBUS-O-TH-F)
HARSH (LAN-WMBUS-O-TH-H)

TEMPERATURE
(LAN-WMBUS-O-T)



Recommended mounting instructions:

- Mount on a solid wall using two screws
- Place the sensor 160-180cm above floor
- The ventilation hole at the bottom must be down

Step 1:

Note the small ventilation hole at the bottom of the device. It is crucial that this hole is pointing DOWN when mounted to prevent dust and water from entering the device.

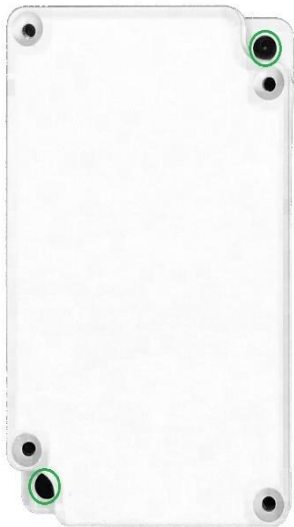
Note. The temperature only device do not have this hole.



Step 2:

To activate the unit, hold a magnet on the LANSEN-label (marked by a green arrow) for 10 seconds. A red LED on the inside starts to blink when activation is started (lid must be off to see it).

Remove the magnet when the LED starts blinking or after 10 seconds has passed.



Step 3:

Mount the device to a wall with two screws through the holes marked by green circles according to the recommended mounting instructions. Make sure the ventilation hole at the bottom is at the BOTTOM.

The installation is now complete!

